



Mottingham Lane, London, SE9

Offers Over £225,000

🛏 1 🚿 1 🛋 1

- Chain Free Sale
- One Bedroom Top Floor Flat
- Share of Freehold
- Fantastic Buy to Let Opportunity Or First Time Purchase
- Mottingham Station 0.7 Mile walk
- Parking Space
- 160 Years Underlying Lease
- Communal Garden
- Service Charge £1711 PA
- Council Tax Band C - London Borough Of Bromley



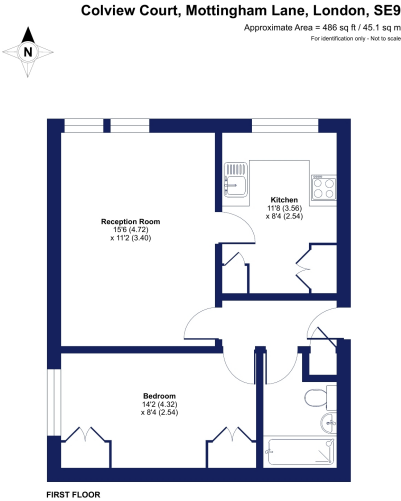
***** CHAIN FREE SALE - OFFERS OVER £225,000 *****

Offered to the market CHAIN FREE, this one bedroom top floor apartment is ideal for first time buyers and buy to let investors. Set in a quiet location, it is being sold with a Share of Freehold (underlying lease 160 years) and comprises double bedroom, bathroom, fitted kitchen and bright reception room with excellent views.

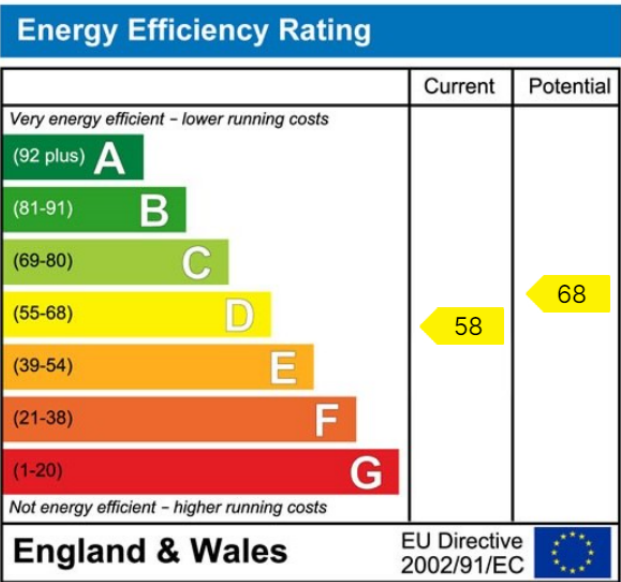
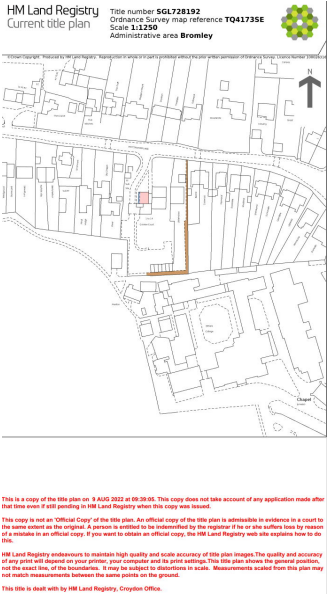
To the rear of the building there is a well maintained communal garden and the property comes with one parking space. The area is served by excellent transport links to Central London, Eltham, Chislehurst and Bromley.

160 Years Lease With Share of Freehold - £1711 PA Service Charge





Certified
Floor plan produced in accordance with RICS Property Measurement Standards incorporating
International Property Measurement Standards (IPMS) Requirements © 2018/2019/2022
Prepared for Cockburn Estates Agents 020 8859 8590



Cockburn EA
352 Footscray Road,
London, SE9 2EB
t: 020 8859 8590